



TAURANGA

# Gamefisher

JANUARY 2016



sponsors grid

TAURANGA SPORT FISHING CLUB	JOHN SMYTH	DAVID HILL	STEVE GILBERT	THE BIRD
ALL ABOUT CONSTRUCTION	INDUSTRIAL PLASTICS	METALCO REGION	...	...
...	...	...	...	...

ALL ABOUT CONSTRUCTION  
GAME ON! TOURNAMENT

ANGLER	Nichol Johnson
FISH	Breadbill
WEIGHT	133.8 kg
TACKLE	60 kg
LAUNCH	Fixation
DATE	22-1-16

## ALL ABOUT CONSTRUCTION GAME ON TOURNAMENT

sponsors grid  
Pine Sawmills

# contents



**Cover:** Rachel Johnson with her winning 133.800kg Broadbill caught on 'Fixation' during the 2016 All About Construction Game On Tournament

## FEATURES

- 8-9 All About Construction 'Game On' Report & Results
- 10 White Pointer Boats/Honda Marine Trailer Boat Tournament Report & Results

## REGULARS

- 2 High Tides
- 3 President's Report
- 4 Provisional Pins & Points
- 5 Roly's Report
- 6 NZSFC Report
- 7 TSFC Sponsors Grid
- 11-12 Galley Menu
- 13 Recipe - Cream Cheese Penguins
- 15 TSFC Sponsors

Have you got a 'fishy' tale or something of interest that you would like to share in the 'Gamefisher' magazine? Then we'd love to hear from you - give the Club a call 578 6203.



### Disclaimer:

The opinions expressed in articles in the Gamefisher Magazine are those of the authors of such articles and do not necessarily express the views or opinions of the Staff, Committee or Members of the Tauranga Sport Fishing Club.

# high TIDES

An allowance of plus one hour must be made during the daylight saving period (which commences on the last Sunday of September and ends on the first Sunday of April the following year).

## FEBRUARY 2016

1	Mon	1.38am	1.7m	1.55pm	1.7m
2	Tue	2.25am	1.6m	2.39pm	1.7m
3	Wed	3.16am	1.6m	3.27pm	1.7m
4	Thu	4.10am	1.6m	4.19pm	1.6m
5	Fri	5.06am	1.6m	5.15pm	1.7m
6	Sat	6.01am	1.7m	6.11pm	1.7m
7	Sun	6.55am	1.8m	7.07pm	1.8m
8	Mon	7.46am	1.8m	8.00pm	1.8m
9	Tue	8.36am	1.9m	8.52pm	1.9m
10	Wed	9.25am	2.0m	9.43pm	1.9m
11	Thu	10.13am	2.0m	10.33pm	2.0m
12	Fri	11.02am	2.1m	11.24pm	2.0m
13	Sat	11.52am	2.0m		
14	Sun	0.16am	2.0m	12.43pm	2.0m
15	Mon	1.10am	1.9m	1.36pm	2.0m
16	Tue	2.06am	1.9m	2.31pm	1.9m
17	Wed	3.06am	1.8m	3.29pm	1.8m
18	Thu	4.07am	1.8m	4.29pm	1.8m
19	Fri	5.08am	1.8m	5.29pm	1.8m
20	Sat	6.07am	1.8m	6.28pm	1.8m
21	Sun	7.02am	1.8m	7.22pm	1.8m
22	Mon	7.53am	1.8m	8.13pm	1.8m
23	Tue	8.39am	1.9m	8.59pm	1.8m
24	Wed	9.23am	1.9m	9.43pm	1.8m
25	Thu	10.06am	1.9m	10.24pm	1.8m
26	Fri	10.43am	1.8m	11.03pm	1.8m
27	Sat	11.21am	1.8m	11.42pm	1.8m
28	Sun	11.59am	1.8m		
29	Mon	0.22am	1.7m	12.37pm	1.8m

TIMES LISTED ARE NZ STANDARD TIME  
 Sourced from [www.linz.govt.nz](http://www.linz.govt.nz)

# President's Report

Welcome to the January Edition of the Gamefisher magazine. I wish all of our members and their families a Happy New Year and all the very best for 2016. Hard to believe we are into another year and one month has already gone.

I know that the fishing has started off not too bad and the water temperature is slowly heading up to where it should be, hopefully we will have another good season like last year.

The first tournament of the year was the "All About Construction" Game On Tournament held over the weekend of the 22-24 January. A good number of fish were caught and I understand the weekend was a great success, a big thank you to our sponsors and for all the people that took part, and was great to be at the Calcutta Auction at the briefing on the Thursday night, a big thanks to Stu Langdon for his help in making this a fun evening.

The fishing calendar is looking very full and we have some exciting tournaments coming up. The Nationals are on in February from the 20-27 February, and hopefully Tauranga will be well represented in the results. We will also be hosting the Wish for Fish Charity Tournament on the 27th February. So lots happening already, and we are only just starting the year!!!

Until next time, stay safe out on the water, and hopefully we will all enjoy another fantastic fishing season.

## Don



## Mortgage Finance Made Easy

With so many lenders out there, it is often confusing, even daunting, to know where to start. Let Home Loan Advisors NZ take on this challenge for you, at no charge!

Being independent of the banking system or any particular product offering, Home Loan Advisors NZ are well positioned to provide impartial advice and obtain the best possible outcome for your mortgage requirements.

- Our service is FREE to you
- Completely independent
- We do all the work
- Prompt service
- We stay in regular contact
- Confidentiality assured



If you are: Wishing to refinance your existing home, a First home buyer, Self-employed, Property investor, Expat or brand new Kiwi then we should talk ...

Get in touch today by calling **0800 347 101**

To discuss the many loan & interest options available to you



### HOME LOAN ADVISORS NZ

a division of First Mortgage Managers Limited

15 First Avenue, Tauranga | PO Box 13083, Tauranga 3141

Phone 07 928 6252 | Fax 07 928 6255

contact@hlanz.co.nz | www.hlanz.co.nz



**DON'T BE A CLOWN.  
WEAR A LIFEJACKET.**

maritimenz.govt.nz/lifejackets



New Zealand Government

**\$5.00 from the Club**

**Tauranga Game Fishing Club Inc.**

**HISTORY**  
1922 - 2000

N.G. Hansen

# Provisional Pin List

as at 31 January 2016

Please Note: This is only a provisional pin list. It shows the heaviest pin fish for the mens, ladies and juniors sections of each species only. A full provisional pin list, as well as angler and boat points lists, can be found on the Club's website [www.tsfc.co.nz](http://www.tsfc.co.nz) and on the Club's notice board. The red highlighted pins are Club records and green are NZ records.

Species / Date Vessel	Angler	MLJ	FWT(kg)	LWT	Area
<b>ALBACORE</b>					
07-Jan-16 Reality	Sam Jensen	J	11.450	37kg	Pine Sawmills
06-Jan-16 Xarisma	Margaret Patterson	L	8.100	15kg	All About Construction
26-Dec-15 Ocean Monarch	Louise Stewart	L	7.900	24kg	High Duty Plastics
04-Sep-15 Predator	Michael Bailey	M	14.550	24kg	Pine Sawmills
29-Jul-15 Jans Decision	Michael Steens	M	12.855	37kg	Bay Insurance Brokers
06-Jan-16 Bandit	Reuben Palmer	M	8.200	60kg	Pine Sawmills
<b>BIG EYE TUNA</b>					
17-Jan-16 Sterling Belle	Samuel Tingey	M	39.100	37kg	High Duty Plastics
<b>MAHI MAHI</b>					
07-Jan-16 Reality	Sam Jensen	J	6.345	15kg	Pine Sawmills
23-Jan-16 Black Label	Karen Milnes	L	9.100	37kg	Jeff Scott Electrical
17-Jan-16 L'Aventure	Ben Graham	M	8.700	37kg	DeCoro Fishing Tackle
<b>SHARK- THRESHER</b>					
11-Oct-15 Bandit	Justin Tombleson	M	153.200	37kg	Pine Sawmills
<b>SHORTBILL SPEARFISH</b>					
30-Jan-16 Meant 2 Be	Mandy Joe	L	25.800	24kg	Pine Sawmills
23-Jan-16 Black Label	Jessica Milnes	L	26.600	37kg	Jeff Scott Electrical
23-Jan-16 Spellbinder	Eddie Dreaneen	M	27.400	37kg	High Duty Plastics
<b>SNAPPER</b>					
10-Oct-15 The Big Guy	Michael Wheeler	M	3.455	03kg	Tregoweth Sawmills
10-Oct-15 In Pursuit	Tony Brown	M	7.970	06kg	Glassart
25-Oct-15 Ecstasy	Aaron Styles	M	7.655	08kg	Bill Webb Feed Solutions Ltd
10-Sep-15 Free Flo	Cade Burton	J	5.750	10kg	Pine Sawmills
26-Oct-15 Kyrenia	Corinna Hill	L	6.720	10kg	Pine Sawmills
12-Jul-15 Forty Bucks	Caleb Oakes	M	8.760	10kg	Pine Sawmills
07-Nov-15 Kandu	Draydon Layne	J	9.810	15kg	Pine Sawmills
12-Jul-15 Forty Bucks	Mitchell Tombleson	M	5.420	15kg	Pine Sawmills
<b>STRIPED MARLIN</b>					
16-Jan-16 MG Sportfisher	Cade Burton	J	118.900	37kg	Greensaldes Furniture
23-Jan-16 Reality	Lucy Jensen	J	T&R	37kg	Higher Safe Solutions
23-Jan-16 Reality	Rhonda Jensen	L	T&R	37kg	Higher Safe Solutions
23-Jan-16 Aquarius	Sam Hogg	M	96.500	24kg	High Duty Plastics
22-Jan-16 Fixation	Tony Dolman	M	T&R	37kg	Pine Sawmills
24-Jan-16 Reality	Barry Jensen	M	105.800	37kg	All About Construction
<b>SWORDFISH BROADBILL</b>					
22-Jan-16 Fixation	Rachel Johnson	L	133.800	60kg	Pine Sawmills
26-Dec-15 In Pursuit	Tony Brown	M	161.500	60kg	Pine Sawmills
<b>YELLOWTAIL KINGFISH</b>					
02-Jul-15 Forty Bucks	Mitchell Tombleson	M	15.680	15kg	Pine Sawmills
<b>WRECKFISH HAPUKA/BASS</b>					
10-Oct-15 Free Flo	Tom Gollop	M	44.800	24kg	Pine Sawmills
29-Nov-15 Bandit	David Smart	M	15.000	37kg	Glass Art

## POINTS LEADERS as at 31 January 2016

### Anglers

Trudi Batson	800.00
Bill Webb	500.00
Corinna Hill	467.20
Tony Brown	464.37
Sam Hogg	433.76

### Boat

Reality	1159.20
Bandit	963.42
Crows Nest	800.00
Fixation	654.68
The Big Guy	559.47

# Roly's Report

The White Pointer and Honda Marine TRAILER BOAT Tournament was well received and with lots of marketing around this it was disappointing to not have the weather window required to successfully get the angler numbers we wanted. With a tropical storm smashing the BOP on briefing time it was little wonder the 'small boat brigade' mostly decided to stay home. Although we did accommodate a hardy 59 competitors who turned out and mostly harbour fished (thankyou lord for a fantastic harbour!) with a couple braving pretty average conditions outside to scrape together the Skipjack, Albacore and Kingfish. A huge thanks to those that supported this event and given the level of hype around it we will definitely be staging this one again...just bigger and better and fingers crossed with much nicer weather!

Last year the ALL About Construction GAME ON Tournament was huge with nice conditions and plenty of good fish across the scales and many fishy tales, the sort of stories that keep a game fisherman chomping at the bit all winter long. GAME ON is the first blue water event for the year for the Club, so after the success of last year and early season success up north of the Alderman Islands it was anticipated (once we saw the weather forecast was favourable) that numbers would be solid for this one, and they were. Anglers were up from 118 last year to 146 anglers a 20% increase that may have been attracted by the Billfish Calcutta. The concept was clearly new for many but the rationale simple. Bid and win the Team you think may win 'most billfish points' in the Game On Tournament. It certainly created a new competitive edge to this event, incentivising every team to fish as hard as they can. Many thanks again to Stu Langdon who again

served the Club proud with his sublime auctioneering skills. Read the full report later in the Gamefisher!

The new Galley Menu has proven really popular with the restaurant operation getting more and more popular. Please help us by booking larger groups in advance this way we can staff our facility and give you the best service possible through our busy season. If you want my tip, by the way, the Galley Burger is outstanding and if you feel like the best burger you have ever tasted, this one is a good place to start!

With February on us we are throwing ourselves head first into tournament season. There has been lots of hype around the new look Bridgeman Concrete FISH N CHICKS 12-13th February, and welcome A1 Homes as our brand new naming sponsor for the ONE BASE with the new addition to this event of the Bay Insurance Brokers \$10,000 Striped Marlin!!! Get involved as there is lots to look forward to this summer!

Just a reminder the Club is open to guests of anglers and members through events and tournaments. So bring friends, family and your fishing buddy's down to the Club over the tournament times to give them a "taste" of what we are all about and once they are here let's get them signed up!

*Cheers Roly*



**TAURANGA ONE BASE 2016**  
2-5 MARCH 2016

**WIN \$10,000**

The Bay Insurance Brokers **STRIPED MARLIN**  
\*Catch a Striped Marlin equal to or exceeding 175kg and be in to WIN \$10,000 cash.

**bay** INSURANCE BROKERS

**BRIEFING:**  
Tuesday 1st March 2016 at 7.00pm

**4 DAYS OF FISHING...**  
All your favourite species

**PRIZE GIVING:**  
Saturday 5th March 2016 at 7.00pm

**ENTRY FEE**  
\$130.00 per angler  
(Day membership \$20 per/day)

(NB \* Only the largest fish exceeding the specified weight will win)

**SHIMANO**

For more information please contact:  
Tauranga Sport Fishing Club 07-578 6203 or www.tsbfc.co.nz

**HigherSafe SOLUTIONS LTD**

**BILLFISH BONANZA**  
1<sup>ST</sup> - 3<sup>RD</sup> APRIL 2016

**BRIEFING:**  
6.30pm Thursday 31 March 2016

**WEIGH IN:**  
4.00 - 5.00pm Daily

**PRIZE GIVING:**  
6.30pm Sunday 3 April 2016

**SPECIES**

- ✦ **BILLFISH**  
Minimum weight 90kg
- ✦ **BROADBILL**  
Must exceed line weight
- ✦ **TUNA (ALL SPECIES)**  
Minimum weight 10kg
- ✦ **MAHIMAH**  
Minimum weight 4kg
- ✦ **SHORT BILLED SPEARFISH**  
Minimum weight 10kg

**PRIZES**

- ✦ **2 HEAVIEST BILLFISH**  
Blue or Black Marlin or Broadbill
- ✦ **2 HEAVIEST STRIPED MARLIN**
- ✦ **2 TAG & RELEASE BILLFISH**
- ✦ **HEAVIEST:**  
Tuna  
Mahimahi  
Shortbill Spearfish

IN ASSOCIATION WITH  
**PETROLEUM LOGISTICS**  
*The marine fuel guys at...*  
Tauranga Marina & Sydney Harbour Point Marina

**SHIMANO**

For more information please contact: Tauranga Sport Fishing Club 07-578 6203 or www.tsbfc.co.nz



Hi all. The season is well underway, with good fishing being reported up and down both coasts. Some notable catches as well, and great to see yellowfin back again this year. It seems that things haven't really fired up just yet in our immediate area, just waiting for our One Base tournament no doubt.

Also the NZ Simrad Nationals 2016 are just around the corner, 20th to 27th of February. Always popular with our keen fisho's and I don't expect this year to be any different. Make sure you get your teams together and your entry forms in as early as possible. Copies of the NZSFC yearbook, with all the rules governing the Nationals are also available through the club. There are a couple of changes this year, so make sure you're familiar with them before you depart. Notably, there is a new rule regarding Tag Poles which are now restricted to 2.44 meters, the same length as your gaff. This is a change from previous years, so if you've previously carried a 12 ft pole, you'll need to make sure it's changed for the Nationals. This change is a little contentious with some anglers around the country, and I apologise for not having publicised it more at the time of the AGM and its subsequent introduction. We'll see what this year brings in terms of having the change reviewed.

The Nationals are primarily a line class competition and there have been no changes regarding the use of braid, topshots, tippetts and how line class is applied. Unfortunately this area was not re-defined at the AGM, with Council opting to defer the subject until after the IGFA meeting to be held later in the year. NZSF will have delegates at the meeting (probably about June) and they will no doubt be advocating strongly for IGFA to change their rules to better reflect current, modern fishing techniques.

There is a separate section within the Simrad Nationals for those anglers who choose to fish with braid. This is not line class category.

There are also changes to the reporting of tagged fish on a daily basis. I will communicate directly with all teams prior to the Nationals commencing so that we have a clear understanding of how this needs to work. If you need to contact me, please ring me on 021 620 634, or email deryk.n@clear.net.nz .

On the national front, there is little to report, although the results of the "What's Fishing Worth" survey should be out and publicly available shortly. These will no doubt make some interesting reading, and will form the basis of future representations to Government. Work continues on the QMS review being undertaken by MPI and various other Fisheries Management submissions are either being made or prepared.

If you see any contentious practices being undertaken, either by Commercial operators, or for that matter recreational fishermen, I would be very keen in hearing about these. Please get as much information as possible, preferably including photos and identification of the vessel, exact location and so forth.



That's it for another month. Make the most of the season and good fishing.

Deryk Nielsen

NZSFC representative.



### **CLUB MEMBERSHIP NIGHTS & End of Year Ham nights.**

*Just a reminder that our Club nights are Tuesday and Thursday every week, with participation during the year rewarding regular attendance at the end of year Ham Raffles.*

*Every Tuesday and Thursday we encourage you to come in to the club to socialise with other club members and to take part in the raffles and the membership draws. Proceeds from the raffles go towards purchasing the giveaway hams at the end of the year.*

*At the door, by the office window, there is a Card Reader. Please remember to swipe your membership card as you come in, this gives you a draw in the Ham night at the end of the year. The more swipes you have, the more chances you get at the end of year.*

*Come on down and enjoy the hospitality and the facilities our fabulous club has to offer. Jackie, Bruce and Aaron always make these nights great fun*



**MATAMATA MOTOR  
TRIMMERS LTD**

---

Marine Canvas  
Boat Clears  
Canopys  
Marine Upholstery  
Boat Carpets  
Hull Linnings  
Storage Covers  
Marina Fenders

---

Cnr. Mirrieless & Cross Roads  
Phone 07 571 4421

Email [motortrimmer@xtra.co.nz](mailto:motortrimmer@xtra.co.nz)  
Website [www.motortrimmer.co.nz](http://www.motortrimmer.co.nz)



# sponsors grid 2015-16



1 BAY MARINE LTD YAMAHA	2 JEFF SCOTT ELECTRICAL	3 HIGHERSAFE SOLUTIONS	4 PETER CAMPBELL EVES 0274976305	5 NZ BAY FISHER MAGAZINE	6 SOUTHERN OCEAN BOATS	7 STEVES MARINE SUPPLIES
8 ZEALANDIER TOURS JANS DECISION	9 GREENSLADES FURNITURE	10 HIGH DUTY PLASTICS	11 LEGASEA	12 AARON'S	13 TOPCATCH	14 DECORO FISHING TACKLE
15 ALL ABOUT CONSTRUCTION	16 SAFE SURFACES LTD 0275381437	17 PINE SAWMILLS	18 PETER CAMPBELL EVES 0274976305	19 BAY INSURANCE BROKERS 0800 229 252	20 TAURANGA HUNTING & FISHING	21 TAURANGA HUNTING & FISHING
22 CEILING UNLIMITED	23 GLASS ART	24 BILL WEBB FEED SOLUTIONS LTD	25 MOUNT AUTO COURT	26 METAL CO RECYCLERS	27 TAURANGA HUNTING & FISHING	28 D-GLIDE BUSHES
29 TARPAULIN MAKERS 0800 TARP MAN	30 TOPCATCH	31 TREGOWETH SAWMILLS	32 MEAT CO. MT MAUNGANUI	33 DECORO FISHING TACKLE	34 WIZZOS MARINE SERVICES LTD	35 PILOT BAY BOATBUILDERS LTD
36 HOLLAND BECKETT LAWYERS	37 B.O.P MARINE PAINTING	38 PHIL BUCKLAND MOTORS	39 HOLLAND BECKETT LAWYERS	40 HOLLAND BECKETT LAWYERS	41 HOLLAND BECKETT LAWYERS	42 HOLLAND BECKETT LAWYERS



# ALL ABOUT Construction GAME ON! TOURNAMENT 22-24 JANUARY 2016

The week leading up to an event like the Game On tournament is always interesting as anglers pour over SST information and look to update themselves on the latest fish information of 'what, where and which lure' being the focus of each chat. The large swell in the days leading up to the event had kept many anglers from entering with 92 of the 148 entering in the two hours before the event. Fiona in our office had to do a quick twirl in the phone box in order to get through the amount of processing. Our new mantra is something about 'eating a whale one bite at a time!'



The Calcutta, although it had been well advertised, was a new concept for many of those turning up for registration but after the briefing and the rules explained the floor belonged to the exuberant Stu Langdon who is the master of the ring at auction time. Tentative bidding at start turned into bids 400+ for Ocean Monarch, Black Label, The Big Guy, In Pursuit and Kandu with bidding

topping out at \$600 for Fixation. The Jensen Boat 'Reality' in hindsight went cheaply for \$200 maybe because she was yet to be proven...but prove herself she did with the crew tagging two marlin and weighing another to take out not only 1st place in the Calcutta but also the most billfish tagged and the heaviest striped marlin for the event. Barry Jensen the angler, at 77years of age, also unknowingly has set himself up nicely for the Glenn Weale Trophy which is awarded annually for the 'heaviest billfish by a senior angler'. Continuing with the Jensen domination, as there were no other fish weighed by a junior, Lucy Jensen took out the Junior prize with a T&R Striped Marlin.

The conditions over the three days were nothing short of spectacular with the odd bit of breeze and big swell but otherwise fine weather and variable winds. Many boats travelled northwards through the All About Construction and High Duty Plastic grids up to the most north grids of Higher Safe Solutions and Jeff Scott Electrical. There had been good fishing up here in

previous weeks but also a lot more boat pressure with various Mercury Bay tournament results convincing the more southern skippers this was the best option.

Meanwhile Fixation had decided to fish our local waters and was first to call in a big fish hook up with Seacoms. As the hours rolled by it became clear they were hooked up to one stubborn customer that was to test the patience and endurance of lady angler Rachael Johnson. After a 3 1/2 hours battle the Fixation team boated a magnificent 133.8kg Swordfish from their own Pine Sawmills Grid. What felt like just an hour later Fixation called in another hook up, this time it was Tony Dolman's turn to do some work later reporting a T&R Striped Marlin. Two for the day squarely put these guys as the ones to beat in the early stages.

Day two saw the fortunes of many teams change for the better with Glenn Sutton landing a 71.7kg Big Eye Tuna and Kylie Elsmly topping the fortunes off for the Brother in Arms team with a nice 15.4kg Yellowfin Tuna. Team Reality tagged and released two Striped Marlin and many others reporting Spearfish over the next 48hours including the winning fish, a respectable 27.4kg S/B from Eddie Dreaneen off Spellbinder. Not many Mahi this year, in fact just the one caught by Karen Milnes off Black Label weighing 9.1kg. Congratulations too must go to Sam Hogg off Aquarius for their first Marlin to the boat taking out second at 96.5kg and of course all of those that tagged and released Marlin not already mentioned (Aurora II, Fin Finder, Kyrenia, Black Label and Lured)

All in all a wonderful weekend of fishing, weather and great yarns over a few beers back at the Club. It now certainly feels like summer! Thanks again to All About Construction, Shimano, Topcatch, Glass Art and Seacoms for their listening watch. Cheers guys!



Success for the Jensen Family off 'Reality'





## All About Construction / SHIMANO Game-On Tournament 22 - 24 January 2016 RESULTS

Angler Name	Boat Name	Species	FWT kg	LWT kg	Area caught
<b>TWO HEAVIEST TUNA</b>					
1 Glenn Sutton	Brothers in Arms	Big Eye Tuna	71.700	37	High Duty Plastics
2 Kylie Elmsly	Brothers in Arms	Yellowfin Tuna	15.400	37	High Duty Plastics
<b>TWO HEAVIEST FROM EITHER BLUE/BLACK MARLIN OR BROADBILL</b>					
1 Rachel Johnson	Fixation	Broadbill	133.800	60	Pine Sawmills
2	DRAWN				
<b>TWO HEAVIEST STRIPED MARLIN</b>					
1 Barry Jensen	Reality	Striped Marlin	105.800	37	All About Construction
2 Sam Hogg	Aquarius	Striped Marlin	96.500	24	High Duty Plastics
<b>TEAM WITH MOST T&amp;R MARLIN</b>					
Reality	2 x T&R Striped Marlin				
<b>HEAVIEST FISH CAUGHT BY JUNIOR ANGLER</b>					
Lucy Jensen (JNR)	Reality	Striped Marlin	T&R	37	Higersafe Solutions
<b>HEAVIEST MAHI MAHI (if caught)</b>					
Karen Milnes	Black Label	Mahi Mahi	9.100	37	Greenslades Furniture
<b>HEAVIEST SHORTBILL SPEARFISH (if caught)</b>					
Eddie Dreaneen	Spellbinder	Shortbill Spearfish	27.400	37	High Duty Plastics

### Thank you to our Sponsors

2015	STATISTICS	2016
<b>118</b>	<b>Total Anglers</b>	<b>146</b>
9	Junior Anglers	8
<b>40</b>	<b>Teams</b>	<b>47</b>
1	Yellowfin Tuna	1
	Big Eye Tuna	1
10	Albacore Tuna	-
-	Skipjack Tuna	-
2	Blue/Black Marlin	-
-	Broadbill	1
4	Striped Marlin	2
6	T&R Marlin	8
5	Mahi Mahi	1
2	S/B Spearfish	5
<b>30</b>	<b>Total Fish</b>	<b>19</b>



**SHIMANO**  
FISHING NEW ZEALAND

### 2015 Results

Heaviest Blue Marlin was 212.200kg caught in Mack Cavanagh Trucks  
 Heaviest Striped Marlin was 120.100kg caught in Mack Cavanagh Trucks  
 Heaviest Yellowfin Tuna was 20.900kg caught in Scania Cavanagh Trucks



# WHITE POINTER BOATS HONDA MARINE

# TRAILER BOAT TOURNAMENT 2016



Mother-nature didn't get the email about calm seas and blue skies for this one. Anglers young and old were greeted at briefing with a 30knt Nor Easter, sideways rain and a 3m swell outside the entrance. The glimmer of hope came from forecasting suggesting fine skies and much lighter winds and a falling swell the following day. So with this, 58 hardy souls got fishing with the event held under a weather caution and most wisely deciding to stay in the harbour for the day. The species schedule was vast and with Kahawai, Snapper, Trevally and Kingfish all known to frequent harbour waters this time of year the stage was set for an inshore/harbour show down!



A few of the more capable boats headed out wide where later in the day conditions again deteriorated making their time on the briny pretty tough, but the results came for these boats with TBA, Notorious and Kandu getting among the Skipjack, Albacore and offshore Kingfish. Also braving the outside conditions Hustler, who fished down Matakana, did well on the Snapper with Caly Pillay taking out the heaviest.

The Measure and Release Section is getting more popular too as competitors cotton on to the fact that awesome prizes can be won by returning fish. Congratulations to Luke Dolman and Draydon Layne taking out the M&R Snapper and Kingfish sections respectively.

This was the first Trailer Boat tournament for the Club and we will be certainly having another encouraged by the positive comments and feedback, so thanks everyone! Finally thank you to White Pointer Boats, Honda Marine and Topcatch for their support and sponsorship. Remember to keep these guys in mind should you require their services!



## RESULTS

	Angler Name	FWT
<b>HEAVIEST SNAPPER</b>		
1	Caly Pillay (L)	3.210
2	Steven Lydiard (J)	2.555
3	Wayne Smith	2.500
<b>HEAVIEST KAHAWAI</b>		
1	Jovanna Pillay (J)	2.855
2	James Johnston (J)	2.665
3	Leanne Lory (L)	2.570
<b>HEAVIEST TREVALLY</b>		
1	DRAWN	
2	DRAWN	
3	DRAWN	
<b>HEAVIEST JOHN DORY</b>		
1	DRAWN	
2	DRAWN	
3	DRAWN	
<b>HEAVIEST SKIPJACK TUNA</b>		
1	Luke Dumbleton	4.600
2	Dylan Ward	4.300
3	Nathan Wingate	4.165
<b>HEAVIEST ALBACORE TUNA</b>		
1	Mark Travis	2.245
2	James Hone	2.200
3	Nathan Wingate	2.185
<b>SNAPPER - MEASURE &amp; RELEASE</b>		
1	Luke Dolman	51.5 cm
2	Draydon Layne (J)	34 cm
3	Stephanie Pound (L)	33 cm
<b>KINGFISH - MEASURE &amp; RELEASE</b>		
1	Draydon Layne (J)	111 cm
2	Draydon Layne (J)	85 cm
3	Steven Lydiard (J)	83.5 cm
<b>JUNIOR - HEAVIEST FISH OVERALL</b>		
1	Jovanna Pillay (J)	Kahawai 2.855
2	James Johnston (J)	Kahawai 2.665
3	Steven Lydiard (J)	Snapper 2.555
<b>LADIES - HEAVIEST FISH OVERALL</b>		
1	Caly Pillay (L)	Snapper 3.210
2	Leanne Lory (L)	Kahawai 2.570
3	Robin Lydiard (L)	Kahawai 2.075



## Breads & Bar Snacks

TOASTED GARLIC CIABATTA	8.00
w garlic aioli	
HERB & CHEESE BAGUETTE	10.50
w sweet chilli cream cheese dip	
GOLDEN FRIES	SM 6.00 LG 8.00
SEASONED WEDGES	10.00
*Add Bacon & Cheese	14.00

## Entrees & Light Meals

CLASSIC SHRIMP COCKTAIL (GF)	14.00
w homemade thousand island dressing & iceberg lettuce	
SALT & PEPPER CALAMARI (GFA)	14.00
MAIN SIZE W FRIES	18.00
Tender calamari in a crispy salt & pepper coating w aioli, tomato chilli jam & salad greens	
PANKO BREADED SCALLOPS (GFA)	15.50
MAIN SIZE W FRIES	19.50
Six scallops in golden panko breadcrumbs. Served w salad, homemade tartare	
DEEP FRIED CAMEMBERT (V)	15.00
Crumbed camembert cheese w Fig jam, side salad & garlic ciabatta	
DUCK LIVER PATE (GFA)	14.00
Our house made Pate w brandy & thyme. Served w red currant jelly & crostini	
LEMONGRASS CHICKEN SATAYS (GF)	13.00
MAIN SIZE W RICE & COLESLAW	16.00
w coriander peanut sauce	

NACHOS (GF) 19.00

W melted cheese, guacamole, beef mince & beans, fresh tomato salsa

CHICKEN GUACAMOLE BURGER 17.00

Seared chicken fillet w streaky bacon, guacamole, lettuce & tomato salsa on a toasted bun. Served w fries

GALLEY BEEF BURGER 17.00

Prime beef pattie, bacon, egg, cheese, salad & beetroot relish on a toasted bun. Served w fries

POTATO, CAULIFLOWER & PARMESAN CROUQUETTES (VA) 15.50

W candied bacon, garden salad & black vinegar aioli

5 SPICE CHILLI CHICKEN SALAD (GF) 18.00

Marinated chicken thigh fillet in a sweet & mildly spiced glaze over salad greens, avocado, mango & toasted sesame mayo.

STEAK CAESAR SALAD (GFA) 19.00

Seared slices of tender scotch fillet, cos lettuce, garlic crostini, cherry tomatoes & parmesan cheese w creamy Caesar dressing.

CUBAN SANDWICH 16.50

Toasted baguette roll filled w Pork belly, ham, hot mustard, melted swiss cheese & dill pickles. Served w fries

THE GALLEY FISH & CHIPS (GFA)  
SM 17.00 LG 22.00

Fresh fish fillets in a light & crispy beer batter OR golden breadcrumbs w fries, salad & tartare sauce



## Mains

CHICKEN GNOCCHI 22.00

Potato gnocchi sautéed w button mushrooms, seasoned chicken & bacon in a creamy white wine parmesan sauce

SCOTCH 32.00

250gm Prime scotch fillet, cooked to your liking, w potato & cauliflower croquettes, green beans & grilled tomato w béarnaise & jus

T BONE (GF) 27.00

350gm T-Bone steak, cooked to your liking w chips, salad & your choice of mushroom, garlic or pepper sauce

ADD PRAWNS & SCALLOPS 32.00

PORK BELLY (GF) 27.00

Crispy pork belly slices w pan seared scallops, pickled apple slaw & sweet corn puree. Finished w black vinegar aioli & jus

THAI STYLE CURRIED FISH FILLETS (GFA) 24.50

Pan seared fresh fish fillets w summer vegetables, prawn cutlets & a light coconut green curry sauce. Paired w steamed white rice & prawn crackers.

### Kids Meals

**Kids Beef & Cheese Slider w Fries 7.00**

**Cheese & Ham Toastie w fries 7.00**

**Chicken Tenders w Fries 7.00**

**Battered Fish w Fries 7.00**

**Mini Hotdog w Fries 7.00**

## Desserts

HOMEMADE FRESH CHEESECAKE 14.00

Served w vanilla ice cream. Please check our blackboard for today's flavour

ICE CREAM SUNDAE 3.00

Vanilla ice cream w chocolate fish, marshmallows & your choice of chocolate, berry or caramel sauce

VANILLA PANACOTTA 14.00

w vodka & mint strawberries & sugar biscuit snap

CHOCOLATE MOUSSE & MUD CAKE 14.00

w Chocolate sauce & vanilla ice cream

LEMON MERINGUE PIE 12.00

W lemon curd & berry couli

## Espresso Coffee & Teas

Long Black 3.50

Short Black 3.50

Flat White 4.50

Cappuccino Sm 4.50 Lg 5.00

Mochaccino Sm 4.50 Lg 5.00

Americano 3.50

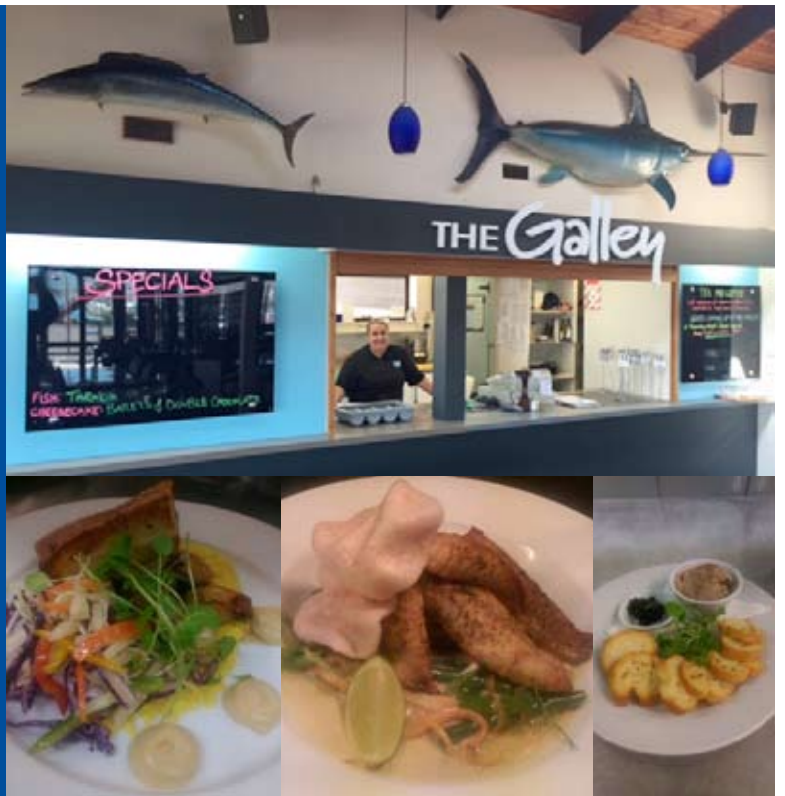
Latte 4.50

Hot Chocolate Sm 4.50 Lg 5.00

Cup of Tea

- Earl Grey or English Breakfast 3.50

**Enjoy a meal  
at  
The Galley  
Open for  
Lunch &  
Dinner  
7 days a week  
ph 578 6203**



Sourced from [www.maritimenz.govt.nz](http://www.maritimenz.govt.nz)

## Cream Cheese Penguins

### Ingredients

Serves: 18

- 18 large black olives, pitted
- 1 packet cream cheese (250g), softened
- 18 small black olives
- 1 carrot

### Directions

Preparation: 25min

1. Cut a slit from top to bottom, lengthwise, into the side of each large olive. Carefully insert about 1 teaspoon of cream cheese (or whatever fits) into each olive.
2. Slice the carrot into eighteen 1/2cm thick rounds; cut a small notch out of each carrot slice to form feet. Save the cut out piece and press into centre of small olive to form the beak. If necessary cut a small slit into each olive before inserting the beak.
3. Set a big olive, large hole side down, onto a carrot slice. Then, set a small olive onto the large olive, adjusting so that the beak, cream cheese chest and carrot feet line up. Secure with a toothpick.



# STEAK NIGHT @ THE GALLEY

every Thursday



**\$25**

Prime NZ Scotch, Sirloin or T-Bone  
w Salad, Chips & Jus

Tauranga Sport Fishing Club - 66 Keith Allen Drive - Sulphur Point Marina - Tauranga  
578 6203 | office@tsfc.co.nz | www.tsfc.co.nz

Tauranga Sport Fishing Club Inc.



**KEEP  
CALM  
WE HAVE  
FREE  
WIFI**

Wi-Fi is now available for free access to your email and internet browsing - ask at the Bar for the password and enjoy our cosy comfy lounge while you work or play!

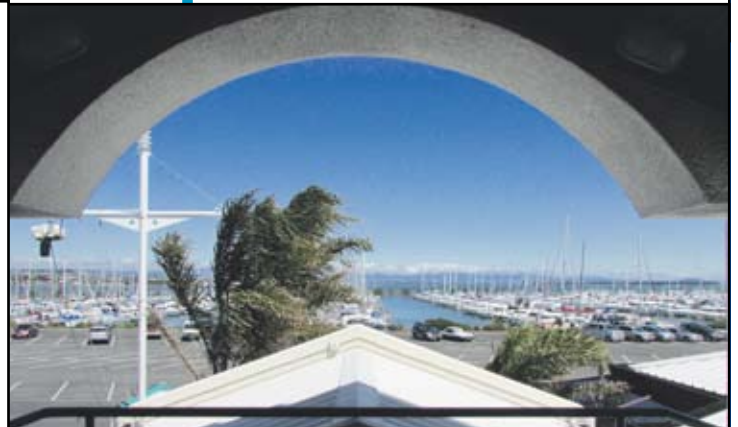
66 Keith Allen Drive | Sulphur Point Marina | Tauranga  
578 6203 | office@tsfc.co.nz | www.tsfc.co.nz



**Looking for somewhere to hold  
your next meeting or  
mini-conference?**

**Then ask us about the  
'Tuhua' room  
upstairs at the Club**

**\*Great facility\***  
**\*Reasonable rates\***  
**\*Plenty of free parking\***  
**ph 578 6203**



# Upcoming Events

## FEBRUARY

- 12-13 Bridgeman Concrete 'Fish n Chicks' Tournament
- 14 Valentines Day
- 20-27 NZSFC Simrad Nationals
- 29 Leap Year

## MARCH

- 2-5 A1 Homes ONE BASE
- 25 Good Friday (Club Closed)
- 28 Easter Monday



**NEW ZEALAND SPORT FISHING**

**SIMRAD**

**NATIONALS 2016**

20-27 FEBRUARY

Entry \$25 per angler  
Fish anywhere in NZ  
NZ Championship awards at stake

Enter via your affiliated fishing club.  
For full details and terms and conditions visit  
[www.nzsportfishing.org.nz](http://www.nzsportfishing.org.nz)



**LIKE us on Facebook**  
**Tauranga Sport Fishing Club**

## TSFC Sponsors

- \*Adult World
- \*All About Construction Ltd
- \*Barclay Engravers
- \*Bay Insurance Brokers Ltd
- \*Bay Marine - Yamaha
- \*Bay Marine Electronics
- \*Bay Quality Fish Smoker
- \*BOP Caravan Rentals
- \*Bill Webb Feed Solutions Ltd
- \*BOP Marine Painting
- \*Bridgeman Concrete
- \*Burnsco Marine and Leisure
- \*Calnar Business Systems
- \*Cavanagh Truck Spares Ltd
- \*Ceilings Unlimited
- \*Coleman
- \*Daiwa
- \*DB Breweries Ltd
- \*De Coro Fishing Supplies Ltd
- \*D Glide Bushes
- \*Don Stewart Jewellers
- \*Electrical Works Ltd
- \*Electronic Navigation Ltd
- \*First Mortgage Trust
- \*Fin Nor
- \*Fixation Charters
- \*Glass Art
- \*Greenslades Furniture Co
- \*Gull NZ Ltd
- \*High Duty Plastics
- \*Highersafe Solutions
- \*Holland Beckett Lawyers
- \*Independent Liquor (NZ) Ltd
- \*Intalok Homes
- \*Jeff Scott Electrical
- \*Kilwell Sports Ltd
- \*Konica Minolta
- \*Lakeland Steel Ltd
- \*Legasea
- \*Mack Contracting
- \*Marine Reflections
- \*Matamata Motor Trimmers
- \*Meat Co
- \*Metal Co Recyclers
- \*Mount Auto Court
- \*Mount Motorcycles Ltd
- \*Nutech Security
- \*NZ Bayfisher Magazine
- \*NZ Fishing News
- \*Okuma
- \*Peter Campbell - Eves Realty
- \*Peter Phipps Signs
- \*Pine Sawmills NZ
- \*Pine Sawmills Posts NZ
- \*Petes Takeaways
- \*Phil Buckland Motors

**We thank you for your continued support**

- \*Pilot Bay Boat Builders Ltd
- \*Plumberman Tauranga
- \*Refresh Renovations
- \*Rowe Motors
- \*Safe Surfaces Ltd
- \*Sanford Ltd
- \*Sea Communications Tauranga
- \*Seatrek
- \*Shimano NZ
- \*SmileClick Event Photography
- \*Southern Ocean Boats
- \*Southern Produce
- \*Steves Marine Supplies
- \*Super Liquor Greerton
- \*Tarpaulin Makers
- \*Tauranga Boat Sales
- \*Tauranga Hunting & Fishing NZ
- \*Tauranga Marine Industry Assn.
- \*Tauranga Sandblasting
- \*Tauranga Tree Services
- \*The Galley
- \*The Radio Network
- \*Topcatch
- \*Tregoweth Sawmills
- \*Wizzos Marine Services
- \*Versatile Panelbeating
- \*Zealandier Tours

# KILWELL

# STIFFY RIGGERS



**KILWELL STIFFY RIGGERS FULLY RIGGED WITH BOLT ON BASE**

**KILWELL STIFFY RIGGERS FULLY RIGGED WITH DROP-IN BENT BASE**

**KILWELL STIFFY RIGGERS POLES ONLY**

Carbon fiber multi-piece telescopic blanks, designed to be compact but highly functional. These outriggers are lighter and very stiff compared to fiberglass or aluminium poles and give a crisper release when a lure is struck and prevent the lures "tumbling" in a rough sea.

**KILWELL STIFFY RIGGERS FULLY RIGGED WITH BOLT ON BASE**  
To be bolted onto your cabin or gunwhale, supplied fully-rigged including AFTCO roller troller release clips and protective storage covers.  
Sold as a pair

**KILWELL STIFFY RIGGERS FULLY RIGGED WITH DROP-IN BENT BASE**  
Designed to fit straight into your existing rod holders or rocket launcher. Supplied fully-rigged including AFTCO roller troller release clips and protective storage covers. Sold as a pair

**KILWELL STIFFY RIGGERS POLES ONLY**  
Complete telescopic poles fitted with nylon camlocks, halyard eyes and alloy spear tip protector. Supplied with a protective cover. Sold per each.

**VARIOUS LENGTHS AVAILABLE:**  
3.6m 3pc, 4.5m 3pc, 4.5m 4pc,  
5.5m 4pc, 6.7m 4pc.

**For more information go to [kilwell.co.nz](http://kilwell.co.nz)**